

STRUCTURAL STAGE

RIPARIAN ECOSYSTEM MAPPING OF THE LOWER COQUITLAM RIVER

INTRODUCTION

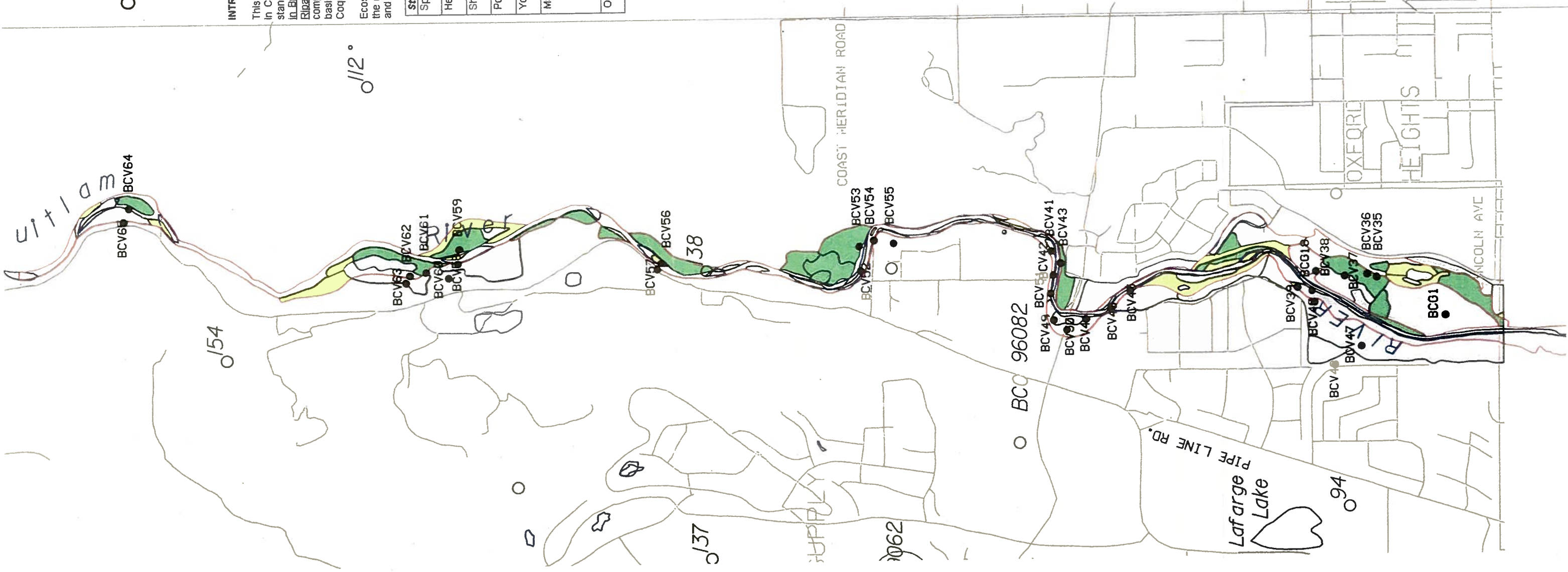
This map displays riparian ecosystem polygons along the Lower Coquitlam River in Coquitlam and Port Coquitlam, British Columbia. Map polygons represent stand structural stages described in Standard for Terrestrial Ecosystem Mapping in British Columbia (RIC 1998). This map is accompanied by a report entitled Riparian Ecosystem Mapping of the Lower Coquitlam River. Fieldwork was completed in August 2000. This mapping of riparian ecosystems will provide the basis for assessing wildlife habitat values of riparian ecosystems along the Lower Coquitlam River.

Ecosystem Structural Stage describes the vegetation structural characteristics of the riparian ecosystem within a given map polygon. Seven stages are mapped and are described below.

Structural Stage	Description
Sparse/Bryoid	sparsely vegetated gravel bars and disturbed areas dominated by mosses, lichens and scattered grasses
Herb-Grass	well vegetated primarily wetlands and bars dominated by grasses and herbs
Shrub-Herb	Low Bench and disturbed areas dominated by shrubs and herbs
Pole Sapling	dense young stands (10-40 yrs) where inter-tree competition has not reduced stand density
Young Forest	older stands (25-80 yrs) where inter-tree competition has reduced stem density
Mature Forest	mature stands (40-250 yrs) where the original trees to regenerate are beginning to be replaced by under-storey trees growing under the canopy - mostly mature black cottonwood stands with western redcedar regenerating beneath
Old Forest	old (>250 yrs), structurally-complex conifer dominated stands

LEGEND

- Structural Stage**
- 1 - Sparse / Bryoid (mosses and lichens)
 - 2 - Herb / Grass Dominated
 - 3 - Shrub / Herb
 - 4 - Pole / Sapling
 - 5 - Young Forest (generally 40 - 80 yrs)
 - 6 - Mature Forest (140 - 250 yrs)
 - 7 - Old Forest (>250yrs)
- Active Floodplain Boundary
- Ground Plot



Riparian Ecosystem Mapping of the Lower Coquitlam River

Projection : UTM
 Datum : NAD 83
 Spheroid : GRS80
 Scale : 1 : 17,500
 Zone : 10 N
 Base : T.R.I.M. (BC Melp) 092G.026, 092G.027, 092G.036, 092G.037
 TRIATHLON FORESTRY HEADQUARTER, VICTORIA, B.C.
 Reserve Boundary Source : Resource Inventory, Ministry of Forests files

CREDITS
 Ecosystem Mapping : Donald McLennan - Okkos Ecological Services Ltd., Smilthere, B.C.
 Field data collection : Donald McLennan and Valerie Veestra
 - Okkos Ecological Services Ltd., Smilthere, B.C.
 Digital Capture : Tony Lui (Triathlon)
 GIS Technician : Cindy Chung
 Project Supervisors : Donald McLennan (Okkos), Ken Blegborne (Triathlon)

SITE SERIES

RIPARIAN ECOSYSTEM MAPPING OF THE LOWER COQUITLAM RIVER

INTRODUCTION

This map displays riparian ecosystem polygons along the Lower Coquitlam River in Coquitlam and Port Coquitlam, British Columbia. Map polygons represent biogeoclimatic site series described in A Field Guide to Site Identification and Interpretation for the Vancouver Forest Region (Green and Klinck 1994), and stand structural stages described in Standard for Terrestrial Ecosystem Mapping in British Columbia (RIC 1998). This map is accompanied by a report entitled Riparian Ecosystem Mapping of the Lower Coquitlam River. Fieldwork was completed in August 2000. This mapping of riparian ecosystems will provide the basis for assessing wildlife habitat values of riparian ecosystems along the Lower Coquitlam River.

Riparian site series describe the different kinds of ecological sites found in the mapped area, and can be placed into two categories: floodplain and non-floodplain sites. Floodplain sites include those ecosystems where flooding effects of the Coquitlam River directly affect the ecology of the site. Sites affected by flooding are located on the 'active floodplain' of the Coquitlam River, the boundary of which is indicated on the map. The ecology and habitat values of these ecosystems may be affected by any changes in the flooding regime of the Coquitlam River. Non-floodplain forest ecosystems occur outside of the active floodplain, mostly on elevated fluvial terraces that are no longer affected by water levels in the Coquitlam River. These ecosystems will not be impacted by changes in the flooding regime of the Coquitlam River.

LEGEND

Site Series

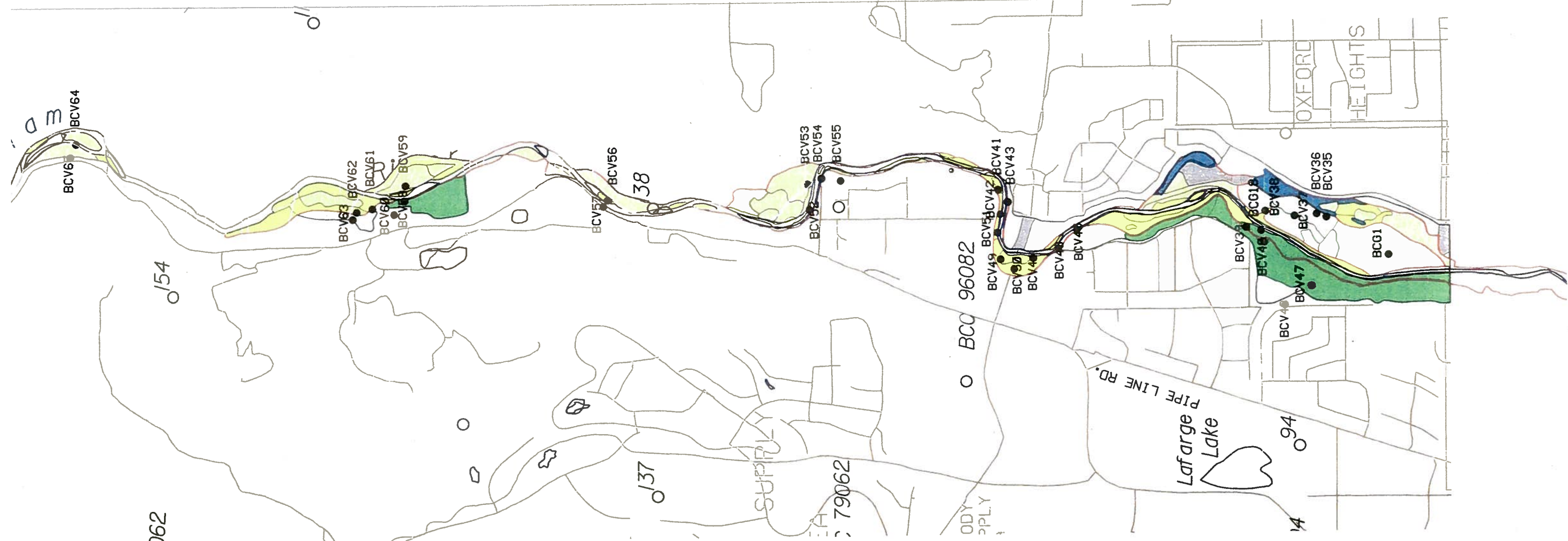
- 05 Cw-Swordfern / Fluvial Terrace Fresh Forest
- 07 Cw-Foamflower / Fluvial Terrace Moist Forest
- 08 Ss-Salmonberry / High Fluvial Bench Forest
- 09 Act-Red osier dogwood / Medium Fluvial Bench Forest
- 10 Act-Willow / Low Fluvial Bench Gravel Bar or Shrub Stand
- 12 CwSs-Skunk cabbage / Forested Swamp
- 31 Phalaris-Carex wetland / Sedge Grass Wetland
- CF cultivated field
- PD pond
- RP road
- UR urban-suburban
- Active Floodplain Boundary
- Ground Plots



Riparian Ecosystem Mapping of the Lower Coquitlam River

Projection : UTM
 Datum : NAD 83
 Spheroid : GRS80
 Zone : 10 N
 Base : T.R.I.M. (BC Meip) 092G 026, 092G 027, 092G 036, 092G 037
 TRIATHLON FORESTRY HEADQUARTER, VICTORIA, B.C.
 Reserve Boundary Source: Resource Inventory, Ministry of Forests files

CREDITS
 Ecosystem Mapping : Donald McLennan - Okkos Ecological Services Ltd., Smithers, B.C.
 Field data collection : Donald McLennan and Valerie Veenstra - Okkos Ecological Services Ltd., Smithers, B.C.
 Digital Capture : Tony Lui (Triathlon)
 GIS Technician : Cindy Chung
 Project Supervisors : Donald McLennan (Okkos), Ken Blagborne (Triathlon)



SITE SERIES

RIPARIAN ECOSYSTEM MAPPING OF THE LOWER COQUITLAM RIVER

INTRODUCTION

This map displays riparian ecosystem polygons along the Lower Coquitlam River in Coquitlam and Port Coquitlam, British Columbia. Map polygons represent biogeoclimatic site series described in A Field Guide to Site Identification and Interpretation for the Vancouver Forest Region (Green and Kinika 1994), and stand structural stages described in Standard for Terrestrial Ecosystem Mapping in British Columbia (RIC 1998). This map is accompanied by a report entitled Riparian Ecosystem Mapping of the Lower Coquitlam River. Fieldwork was completed in August 2000. This mapping of riparian ecosystems will provide the basis for assessing wildlife habitat values of riparian ecosystems along the Lower Coquitlam River.

Riparian site series describe the different kinds of ecological sites found in the mapped area, and can be placed into two categories: floodplain and non-floodplain sites. Floodplain sites include those ecosystems where flooding effects of the Coquitlam River directly affect the ecology of the site. Sites affected by flooding are located on the 'active floodplain' of the Coquitlam River, the boundary of which is indicated on the map. The ecology and habitat values of these ecosystems may be affected by any changes in the flooding regime of the Coquitlam River. Non-floodplain forest ecosystems occur outside of the active floodplain, mostly on elevated fluvial terraces that are no longer affected by water levels in the Coquitlam River. These ecosystems will not be impacted by changes in the flooding regime of the Coquitlam River.

LEGEND

Site Series

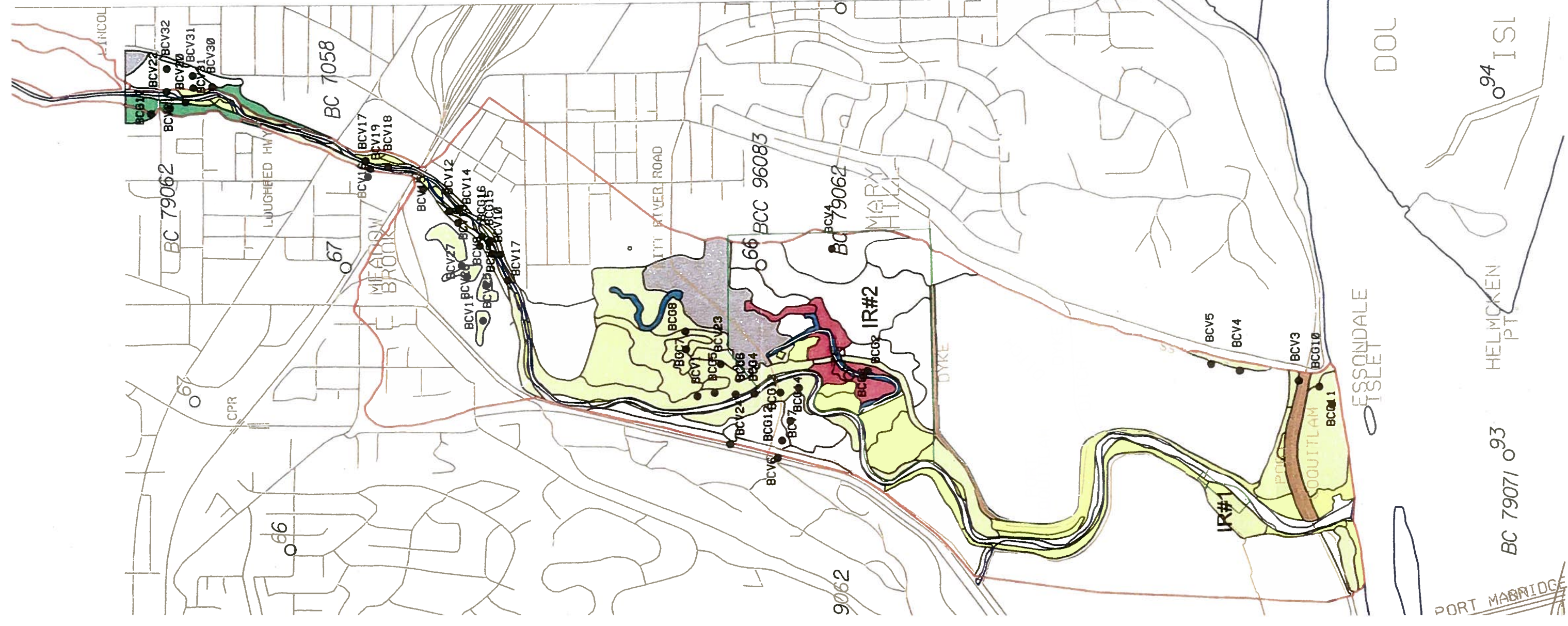
- 05 Cw-Swordfern / Fluvial Terrace Fresh Forest
- 07 Cw-Foamflower / Fluvial Terrace Moist Forest
- 08 Ss-Salmonberry / High Fluvial Bench Forest
- 09 Act-Red osier dogwood / Medium Fluvial Bench Forest
- 10 Act-Willow / Low Fluvial Bench Gravel Bar or Shrub Stand
- 12 CwSs-Skunk cabbage / Forested Swamp
- 31 Phalaris-Carex wetland / Sedge Grass Wetland
- CF cultivated field
- PD pond
- RP road
- UR urban-suburban
- Active Floodplain Boundary
- Reserve Boundary
- Ground Plot



Riparian Ecosystem Mapping of the Lower Coquitlam River

Projection : UTM
 Datum : NAD 83
 Spheroid : GRS80
 Zone : 10 N
 Base : T.R.I.M. (BC Melp) 082G.026, 082G.027, 082G.036, 082G.037
 TRIATHLON FORESTRY HEADQUARTER, VICTORIA, B.C.
 Reserve Boundary Source: Resource Inventory; Ministry of Forests files

CREDITS
 Ecosystem Mapping : Donald McLennan - Oikos Ecological Services Ltd., Smithers, B.C.
 Field data collection : Donald McLennan and Valerie Veenstra - Oikos Ecological Services Ltd., Smithers
 Digital Capture : Tony Lui (Triathlon)
 GIS Technician : Cindy Chung
 Project Supervisors : Donald McLennan (Oikos), Ken Blagborne (Triathlon)



STRUCTURAL STAGE

RIPARIAN ECOSYSTEM MAPPING OF THE LOWER COQUITLAM RIVER

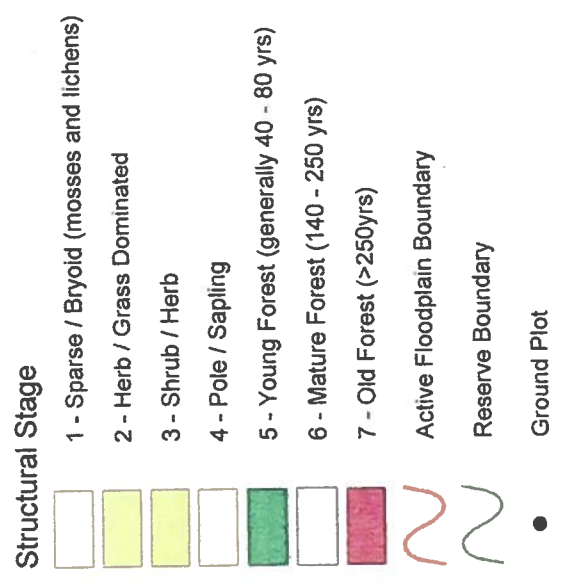
INTRODUCTION

This map displays riparian ecosystem polygons along the Lower Coquitlam River in Coquitlam and Port Coquitlam, British Columbia. Map polygons represent stand structural stages described in Standard for Terrestrial Ecosystem Mapping in British Columbia (RIC 1998). This map is accompanied by a report entitled Riparian Ecosystem Mapping of the Lower Coquitlam River. Fieldwork was completed in August 2000. This mapping of riparian ecosystems will provide the basis for assessing wildlife habitat values of riparian ecosystems along the Lower Coquitlam River.

Ecosystem Structural Stage describes the vegetation structural characteristics of the riparian ecosystem within a given map polygon. Seven stages are mapped and are described below.

Structural Stage	Description
Sparse/Bryoid	sparsely vegetated gravel bars and disturbed areas dominated by mosses, lichens and scattered grasses
Herb-Grass	well vegetated primarily wetlands and bars dominated by grasses and herbs
Shrub-Herb	Low Bench and disturbed areas dominated by shrubs and herbs
Pole Sapling	dense young stands (10-40 yrs) where inter-tree competition has not reduced stand density
Young Forest	older stands (25-80 yrs) where inter-tree competition has reduced stem density
Mature Forest	mature stands (40-250 yrs) where the original trees to regenerate are beginning to be replaced by understory trees growing under the canopy - mostly mature black cottonwood stands with western redcedar regenerating beneath
Old Forest	old (>250 yrs), structurally-complex conifer dominated stands

LEGEND



Riparian Ecosystem Mapping of the Lower Coquitlam River

Projection : UTM
Datum : NAD 83
Spheroid : GRS80
Zone : 10 N
Epsw : T.R.I.M. (BC Meip) 092G.028, 092G.027, 092G.036, 092G.037
TRIATHLON FORESTRY HEADQUARTER, VICTORIA, B.C.
Reserve Boundary Source: Resource Inventory, Ministry of Forests files

CREDITS
Ecosystem Mapping : Donald McLennan - Oikos Ecological Services Ltd., Smithers, B.C.
Field data collection : Donald McLennan and Valerie Veenstra - Oikos Ecological Services Ltd., Smithers, B.C.
Digital Capture : Tony Lui (Triathlon)
GIS Technician : Cindy Chung
Project Supervisors : Donald McLennan (Oikos), Ken Blagborne (Triathlon)

