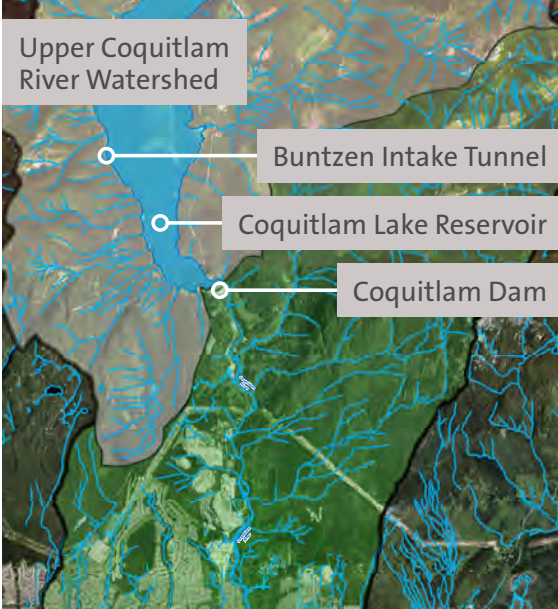




Lower Coquitlam River Watershed Plan Implementation Update 2018 Going Forward



Upper Coquitlam River Watershed

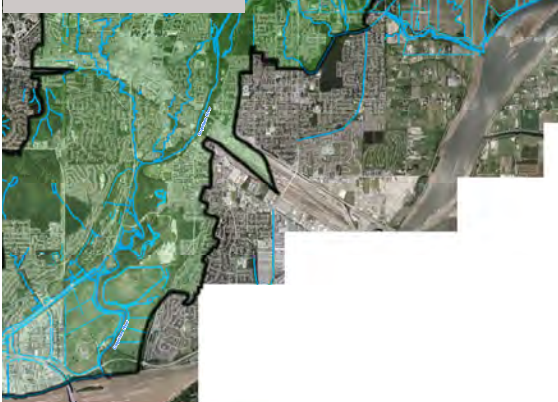


Buntzen Intake Tunnel

Coquitlam Lake Reservoir

Coquitlam Dam

Lower Coquitlam River Watershed



Lower Coquitlam River Watershed Plan

The Coquitlam River Watershed Roundtable is a collaborative body that coordinates and implements activities which promote the long-term sustainability of the watershed. Between 2012 and 2015, the Roundtable created the Lower Coquitlam River Watershed Plan (LCRWP), which resulted from the efforts of more than 60 partners from municipal, provincial, regional, federal and First Nations governments,

aggregate industry, arts and culture, education, outdoor recreation, real estate development sectors and stewardship groups. The LCRWP responds to key pressures that affect watershed health, and provides some initial strategies to address them. Implementing the LCRWP will require the commitment of key partners to support the plan's strategies for action, which aim to provide a healthy, liveable community for people in this watershed.

Strategies for Action – Progress update

This report highlights the progress to date on the strategies for action as provided in the LCRWP. In total, 17 strategy ideas were produced, some which resulted in detailed action plans being developed to address pressures from stormwater, invasive species and development. Recent interest during 2017 has resulted in further strategies

for action to address pressures from water extraction. Recent resource support received through 2017, from the development and business community, and a legacy water funder provides the necessary support needed to implement strategies for action to address development, invasive species and water extraction through 2019.

The Coquitlam River Watershed Roundtable (the Roundtable) was founded in 2011 following a four-year community engagement process. The Roundtable coordinates and implements activities that promote the health and long-term sustainability of the watershed.

WHAT PRESSURES ARE AFFECTING THE THINGS WE CARE ABOUT?

Development (High)



Invasive Species (High)



Stormwater (High)



WHAT ECOLOGICAL AND HUMAN WELL-BEING COMPONENTS ARE BEING AFFECTED?

Riparian Areas, Natural Areas, Liveable Communities and Recreation

Riparian Areas, Natural Areas, Recreation, and possibly Coquitlam River System and Salmon

Coquitlam River System, Riparian Areas, Salmon, Cultural and Spiritual Values, Human Health and Safety and Resource Industries

Strategies for Action

Development Incentives Feasibility Study: to develop potential incentive tools for the development community. A detailed action plan was developed as part of the watershed plan process. **Budget:** \$50,000 cash and in-kind.

Natural space watershed strategy: to assess current open space system, to identify areas to acquire new open space that provides multi-benefits derived from a watershed approach. A conceptual model has been drafted but as yet, no detailed action plan.

Develop impact map: to show cumulative watershed-wide impacts and assist decision-makers. A conceptual model has been drafted, but as yet, no detailed action plan. **Budget:** \$10,000 - 15,000 cash and in-kind.

Implementation Status: ACTIVE. Cash funding was provided by several development and water funders to implement a **development incentives feasibility study** through to 2018. The project includes a developers' workshop, support for Roundtable participation, including First Nations, to provide advice on local watershed and land use planning in the watershed. The strategy to **develop an impact map** was started informally in 2017 through in-kind Roundtable support, however funding is required to complete the work.

Strategies for Action

Alignment of invasive species management efforts: to compile watershed-wide data and apply across municipalities to address Metro Vancouver Invasive Species Management Strategy (Goal 3-L). A detailed action plan has been developed. Currently seeking implementation funding.

Implement ban sale of invasive species: to address Metro Vancouver Invasive Species Management Strategy (Goal 3-L and 3-M). A conceptual model has been drafted. Some additional work through resource support is required to develop an action plan. First target effort is an educational awareness campaign for watershed residents to learn about the impacts of invasive species can have on watershed health, and how to help manage them.

Implementation Status: ACTIVE. Initial work towards the **ban on the sale of invasive species** has involved Roundtable members delivering outreach education programs and displays at community outreach events in Coquitlam and Port Coquitlam in 2016 and 2017. Funding and in-kind support was provided through community grants and services from \$500 - \$3,000. Events included a river walk, interactive activities and displays, participant surveys, a video production and volunteer guides. The Roundtable is seeking funding in 2018 to expand community outreach with the aim to measurable change in behaviour to invasive species and watershed health.

Strategies for Action

Stormwater homeowner outreach: to help single-family homeowners improve stormwater practices in the lower Coquitlam River watershed. A detailed action plan has been developed. This strategy may also align with the **water conservation outreach program strategy**.

Promote adaptive stormwater management process: to achieve stormwater improvements at a watershed-wide scale. A conceptual model has been drafted. Some additional work is required to develop action plan.

Implementation Status: NO PROGRESS YET



Water Extraction (Medium)



Coquitlam River System, Salmon, Human Health and Safety, Resource Industries, Cultural and Spiritual Values and Recreation

Strategies for Action

Develop a set of recommendations for next revision of Water Use Plan: to determine whether local-area water conservation efforts can offset water needs beyond WUP requirements to improve flows needed for salmon. A conceptual model has been drafted. Some additional work is required to develop action plan.

Implement water conservation outreach

program: that focuses on the environmental flow benefits - connect water extraction and reduced water consumption of water to stream and salmon health. This strategy idea has not been fully developed. It will be furthered as capacity grows and potential community partners and/or municipalities express interest and support. This strategy may also align with the **stormwater homeowner outreach strategy**.

Promote “high” standards of water practices for new development, including supporting research: to show benefits can reduce demands of development on the watershed. Strategy idea has not been fully developed. This strategy also links to both Stormwater and Development actions and may be captured as part of alignment to address those pressures.

Implementation Status: ACTIVE. Funding support to **develop a set of recommendations for next revision of Water Use Plan** will advance in 2018. As part of the development incentives feasibility study there is possible overlap to the **promote “high” standards of water practices for new development strategy**.

Recreation (Medium)



Coquitlam River System, Riparian Areas, Natural Areas, Salmon, Resource Industries and Recreation

Strategies for Action

“No Impact” Campaign in schools: to provide locations where kids have access to, and learn how to recreate without environmental impact. A conceptual model has been drafted as part of the watershed plan process, however additional work and implementer support is required to develop the action plan further.

Develop Coquitlam River mainstem outreach

campaign: to prevent unsustainable recreation on the river corridor mainstem that harms riparian areas, aquatic habitat, native plants, species at risk. This strategy idea has not been developed but could be furthered as capacity grows and resources become available.

Implementation Status: NO PROGRESS YET



Vandalism/Illegal Activity (Medium)



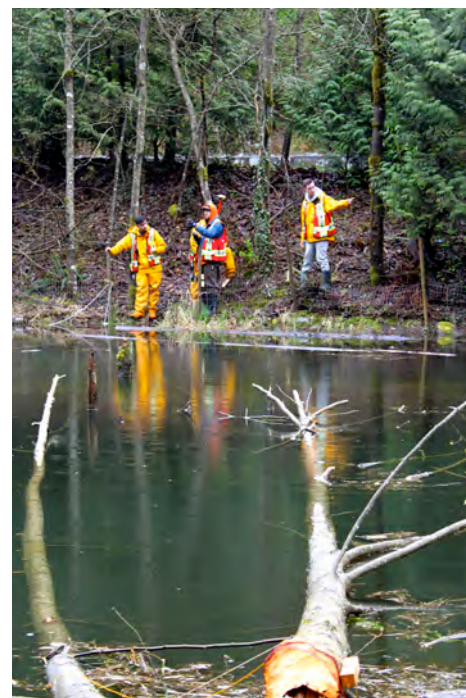
Coquitlam River System, Riparian Areas, Natural Areas, Stewardship, Cultural and Spiritual Values and Recreation

Strategies for Action

Littering/dumping public outreach campaign: to educate residents on cumulative damage of littering/dumping on a watershed-wide scale. A conceptual model was drafted as part of the watershed plan process. However additional work and implementer support is required to develop an action plan.

Outreach program: to provide awareness and understanding about existing tree management and clearing bylaws in the municipalities. This strategy idea has not been developed, but can be furthered as capacity grows and resources become available.

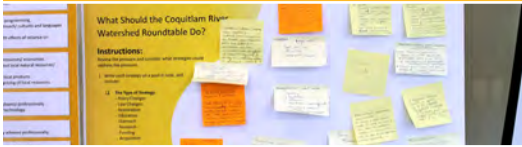
Implementation Status: NO PROGRESS YET



Implementation Partners for Watershed Plan Strategies for Action

Mainstream Cultural Norms (Medium)

Mining (Low)



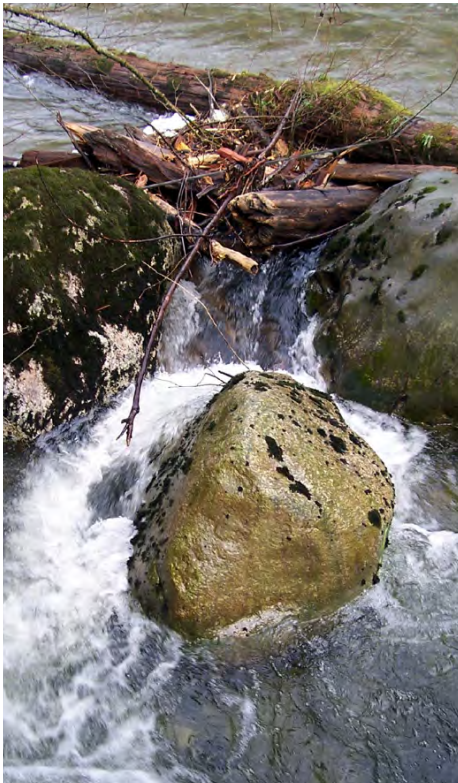
Human Health and Safety, Stewardship, Resource Industries, Cultural and Spiritual Values and Recreation

Coquitlam River System, Salmon and Liveable Communities

Strategies for Action

Outreach work: to link **natural space watershed strategy** (Development) and **Coquitlam River mainstem campaign** (Recreation) to make outdoor access easier. This concept requires further research and interest from partners.

Implementation Status: NO PROGRESS YET



Strategies for Action

Conduct outreach between stewardship groups and mining community: to share information about current mining operations to provide better transparency on mining operations in the watershed. A conceptual model has been drafted. Some additional work and resources are required to fully develop an action plan.

Outreach on current state of mining practices: to inform the community what mining operations do to protect the river. The strategy idea has not been fully developed.

Implementation Status: ACTIVE. The Roundtable includes aggregate industry sector representation and provides a forum for mine operators to provide information about the industry. Jack Cewe Ltd. participates in watershed tours to provide information about their mining operations and the **current state of mining practices** at their site. Jack Cewe Ltd., Allard Contracting and Lafarge Canada also attend core committee meetings and provide updates on their mining operations as well as seek input. Additional opportunities for the aggregate industry to support **outreach between stewardship groups** and the mining community will be pursued through 2018.

The Roundtable gratefully acknowledges the support provided by several partners for the implementation of strategies for action through 2018.

- **Anthem Properties** (Development)
- **BC Freshwater Legacy Initiative** (Development and Water Extraction)
- **Beedie Group** (Development)
- **Brook Pooni & Associates** (Development)
- **Burke Mountain Holdings** (Development)
- **City of Coquitlam** (Development and Invasive Species)
- **City of Port Coquitlam** (Invasive Species)
- **Fisheries and Oceans Canada** (Invasive Species)
- **Jack Cewe Ltd** (Mining)
- **Kwikwetlem First Nation** (Development)
- **Port Coquitlam Community Foundation** (Invasive Species)
- **Real Estate Foundation of BC** (Development and Water Extraction)
- **Vancity Shaughnessy Station Community Branch** (Invasive Species)
- **Watershed Watch Salmon Society** (Development and Water Extraction)

For more information: coquitlamriverwatershed.ca

For information on Open Standards for the Practice of Conservation: cmp-openstandards.org



Follow us on Twitter
@CoqRiverWS



Like us on Facebook
/CoqRiverWS

