

COQUITLAM RiverWatch

940 Stanton Ave. Coquitlam, B.C., V3J 4V2
imcart@telus.net



FEBRUARY 2013

NEWSLETTER

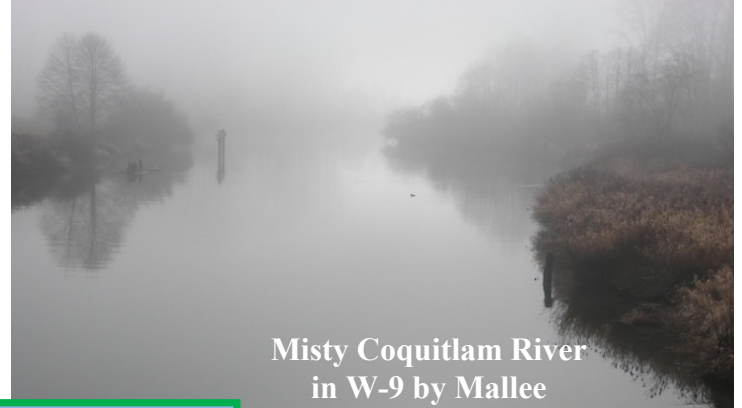
NUMBER 173

Coquitlam River Clean Up

Sunday March 3rd at Lions Park at 10:30am

This event is hosted by the Vancouver Surfrider Foundation. They are a global environmental non-profit organization dedicated to the protection and enjoyment of oceans, waves and beaches through a powerful activist network.

For more info contact Ashley Constable
Email: constable.ashley@gmail.com



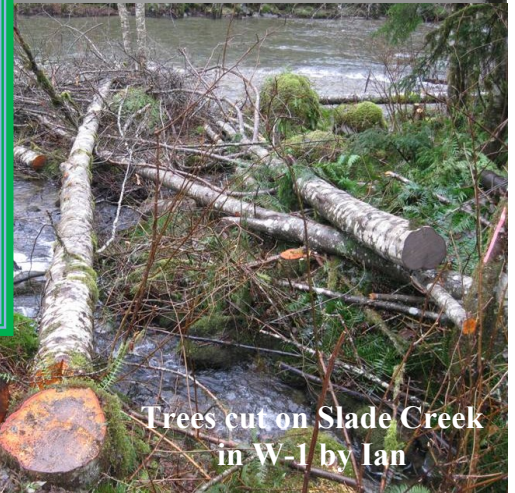
Misty Coquitlam River
in W-9 by Mallee

Port Coquitlam's Annual Volunteer Recognition Awards & Tribute Deadline for 2013 Nominations is March 17

To download a nomination form or to get more information go to their website at

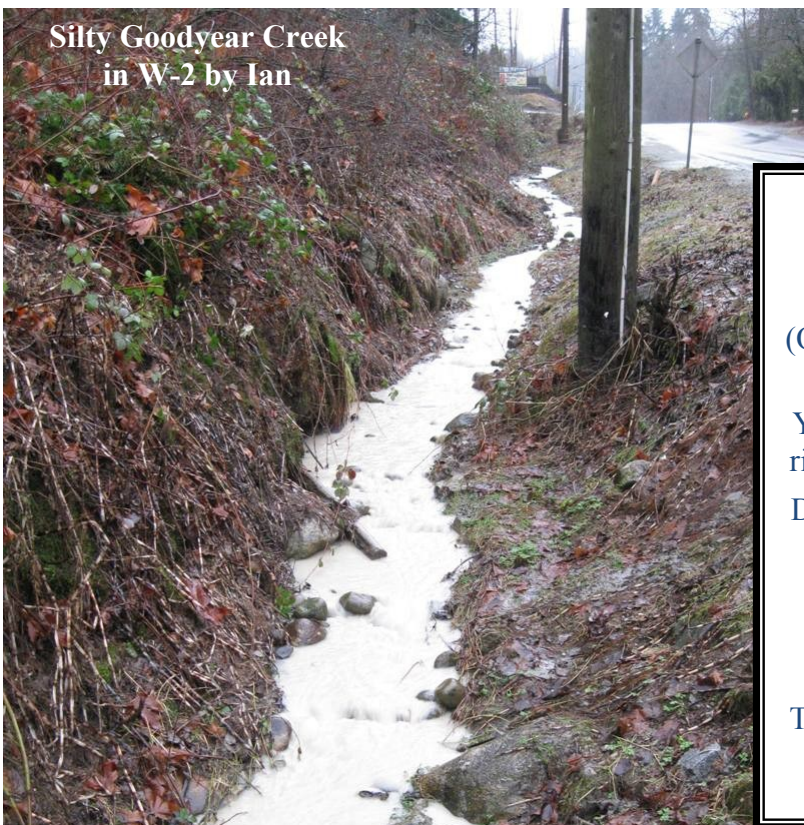
http://www.portcoquitlam.ca/Discover_Port_Coquitlam/Volunteering

Please nominate someone and have their efforts recognized.
Let them know their efforts are appreciated.



Trees cut on Slade Creek
in W-1 by Ian

Silty Goodyear Creek
in W-2 by Ian



BC ENDANGERED RIVERS LIST

This year marks the 21st annual "most endangered rivers" list from the Outdoor Recreation Council (ORC). ORC is asking for nominations toward its 2013 BC Endangered Rivers List.

Your nominations will help them choose the "Top 10" rivers in BC that face threats to their ecological health.

Deadline for nominations will be **Monday Mar. 18th**.

The final list will be distributed later in the spring, helping to raise awareness of BC River issues.

Please send your river nominations to:
outdoorrec@orcbc.ca

To view Endangered Rivers Lists from previous years, visit: http://www.orcbc.ca/pro_endangered.htm

JANUARY RiverWatcher's REPORTS

Ian (W-1) Jan. 27

The River was clear and at a normal level. Slade Creek was clear and flowing. There were no signs of salmon carcasses in Slade Creek. Some trees have been cut down where Slade Creek flows into the Coquitlam River. This is on the south side of the hatchery. Many trees have been cut down for twinning the powerline over Burke Mountain and Eagle Ridge, but no trees have been cut near the Coquitlam River. I hope it stays this way.

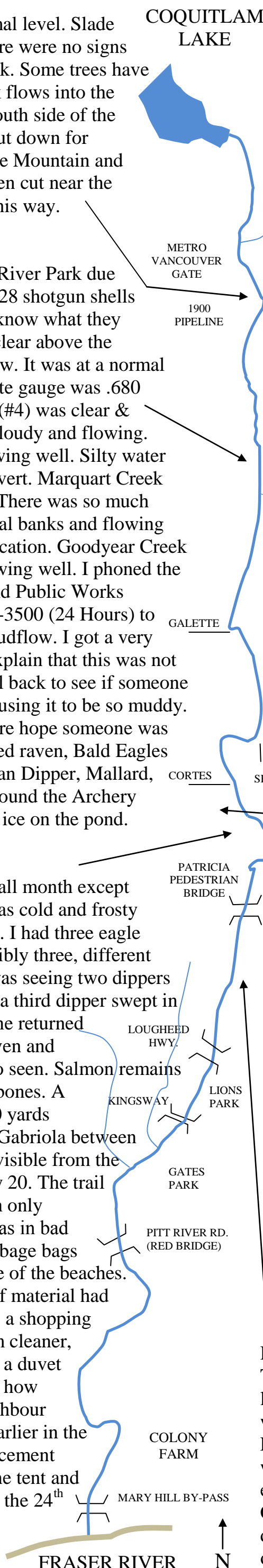
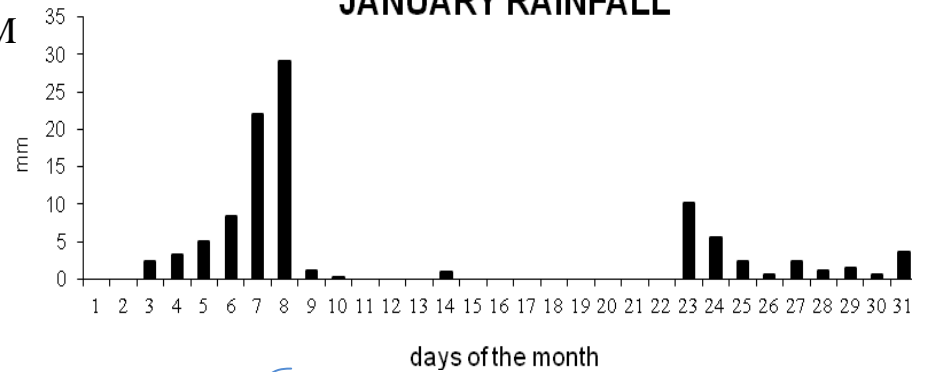
Ian (W-2) Jan. 27

No one was at Upper Coquitlam River Park due to the weather being wet. I found 28 shotgun shells beside the Archery Pond. I don't know what they were shooting at. The River was clear above the gravel operations and cloudy below. It was at a normal level. The water level at the Galette gauge was .680 metres. Falacea (Fulawka) Creek (#4) was clear & flowing. Mantle Creek (#6) was cloudy and flowing. Partridge Creek was silty and flowing well. Silty water was coming from the CS & G culvert. Marquart Creek was cloudy and had a huge flow. There was so much water it was overflowing its normal banks and flowing into the River in more than one location. Goodyear Creek (#11) was extremely silty and flowing well. I phoned the City of Coquitlam Engineering and Public Works Customer Service line at 604-927-3500 (24 Hours) to report Goodyear Creek being a mudflow. I got a very lukewarm response and tried to explain that this was not normal. I asked to get a phone call back to see if someone visited the site to see what was causing it to be so muddy. I never got a phone call back. I sure hope someone was sent out to look at it. Birds included raven, Bald Eagles (1 immature and 1 adult), American Dipper, Mallard, crows. Salmon bones were still around the Archery Pond in UCRP and there was still ice on the pond.

Jeff (W-4) Jan. 13

The river was low, as it had been all month except one day and clear. The weather was cold and frosty with ice on the side channel pools. I had three eagle sightings of at least two, and possibly three, different birds. The highlight of the walk was seeing two dippers in the river singing together, then a third dipper swept in at which all three flew upriver. One returned down river soon after. Gulls, a raven and several Varied Thrushes were also seen. Salmon remains were still visible, almost entirely bones. A tent was set up approximately 100 yards down river from the north end of Gabriola between the trail and the river and clearly visible from the trail. Litter pickup was on January 20. The trail was in its usually good shape with only minimal litter. The river's edge was in bad shape. I collected two bulging garbage bags full. Much of this came from three of the beaches. The tent was still there and a lot of material had been collected around it including a shopping cart, hardwood flooring, a vacuum cleaner, patio umbrella, plastic containers, a duvet and garden tools. I was amazed at how quickly stuff accumulated. A neighbour had called By-law Enforcement earlier in the week and again on the 19th. Enforcement officers had visited both times. The tent and most of the garbage were gone by the 24th but the tent reappeared under the David Avenue Bridge.

JANUARY RAINFALL



Susan (E-4) Jan. 25 (Oxbow Side Channels)

OR CREEK In one of the ponds, on the bank leading up to Shaughnessy Street, were 2 tires and an old washing machine or dryer. They've likely been there a long time, but I never noticed them until I moved my vantage point. The side channels were clear and at a normal level. Wildlife included Black-capped Chickadees, juncos, Golden-crowned Kinglets, Mallards, Buffleheads, Hooded Mergansers, Wood Ducks, Gadwalls, Ring-necked Duck, kingfisher, gull, Great Blue Herons, Bald Eagles (3 immature & 1 adult), crow, flicker, dippers, Pacific Wren, Pine Siskins, and an Eastern Grey Squirrel. My sight of the day was a dipper eating salmon eggs, in the spot where coho were recently spawning. There was still some ice on two ponds. Other birds seen in January along this reach include Chestnut-backed Chickadees, Downy Woodpeckers, Hairy Woodpeckers, Varied Thrushes, Bushtits, nuthatches, towhees, Song Sparrows, Anna's Hummingbirds (2 females), & Common Mergansers.

Carole & Lyn (W-4) Jan. 23

Due no doubt to the time of day and weather, heavy rain at time of walk, the trail was very quiet in every respect. The branch that had impeded our walk in December had been removed, and apart from one chocolate wrapper, the reach was clean. We only saw three people on the trail and one person fishing on the other side of the River. The River was silty and running fast due to the rain. We spotted a Northern Flicker and a Great Blue Heron flying down the river.

Susan (E-3) Jan. 25

The River was clear and at a normal level. Birds included Golden-crowned Kinglets, Common Mergansers, Black-capped Chickadees, juncos, and 2 dippers having a great time together, with many vocalizations. There were a lot of white dipper droppings on the rocks and logs, so they must be residents in this area. I noticed that the waterlogged foam mattress near the Patricia Bridge that was hung up on a log jutting into the river, has recently been removed. I don't think the current could have done this, and it would have been very difficult for a person to accomplish this feat. So kudos to whoever did it!

David (E-5) Jan. 28

Three people underneath the Lougheed Highway Bridge, looks like they were setting up camp. It was only spitting when I started out but was deluging by the time I finished. Looks like the rain has scared everybody away. The River was cloudy and at a low level. It was not as silty as I expected with the recent rains. The only wildlife I saw was Canada Geese. The birds must have been all hunkered down, staying out of the rain. Rain, the force that brings our "Rainforest" to life. ☐ The winter rain is damp & cold, not a nice summer, when it is warm.

JANUARY RiverWatcher's REPORTS

Murray (W-6) Jan. 20

Fairly quiet despite a nice morning. Fishermen were leaving their favourite hole below the Kingsway Bridge, as there are few fish in the River right now. The Reach was really clean so I didn't waste a garbage bag. The usual plastic cups & bags but not enough to pick up this time. The River was clear and at a normal level. It looked really good. The gauge south of the Lougheed Bridge measured 1 metre. Maple Creek was reasonably clear and it was approx. 1' below the unofficial high water mark at the culvert under the dike. Gulls were along the River and the usual crows were in the trees. There was one active homeless camp between Maple Creek and powerline.

Mallee (W-9) Jan. 19

There were 2 dogs on leash and 6 off leash. The mist was still thick even in the afternoon so consequently not as many people as usual. There was only one dog poop on the trail and 7 small pieces of garbage under the Mary Hill Bypass Bridge. It was the cleanest I'd ever seen it. The side channels were often iced over and the river glassy, reasonably clear and slow moving. The water level was reasonably high. There were a few chickadees about and 14 ducks mostly in the side channels as well as two black and white ducks either scaups or Buffleheads; I couldn't tell from a distance. One bird whipped in front of me into the brambles, which I'm guessing, was a Pacific Wren.

David (E-6) Jan. 29

This reach is very urban and even on a wet miserable day there are plenty of dog walkers etc. The River was cloudy and at a low level. It was not as silty as I expected with the recent rains. Wildlife included Mallards, Common Mergansers, Common Goldeneyes, Glaucous-winged gulls, Northwestern crows, and Eastern Grey Squirrel. Many ducks gathered at the south end of the gravel bar just north of the Kingsway and CP Rail Bridges. It's nice to see a good amount of wildlife within such an urban reach. There was lots of beaver activity in the Gates Park area. Buds and catkins were on many trees, alder in particular. Lots of invasive periwinkle and ivy. I noticed that a lot of the mature ivy has seed pods. Ivy is very noticeable in this reach amongst other invasives. While there appears to be some attempt to control some of the ivy more needs to be done before we lose some of the wonderful, old trees in this reach.

GALETTE
CORTES
END OF SHAUGHNESSY

PATRICIA PEDESTRIAN BRIDGE

LOUGHEED HWY.

KINGSWAY

LIONS PARK

GATES PARK

PITT RIVER RD. (RED BRIDGE)

COLONY FARM

COLONY FARM

MARY HILL BY-PASS

FRASER RIVER

Ian & Deanna (E-7) Jan. 20

The River was clear and at a normal to low level. Maple & Scott Creeks appeared clear and flowing. Reeve Slough was low. Birds included Wood Ducks, Hooded Mergansers, Common Mergansers, Bufflehead, Mallards, Spotted Towhee, Song Sparrows, chickadees, & crows. There was still a strong smell of rotting salmon and quite a few skeletons in some areas.

Newsletter editor
Ian McArthur
(604-939-4039)

Email: imcart@telus.net