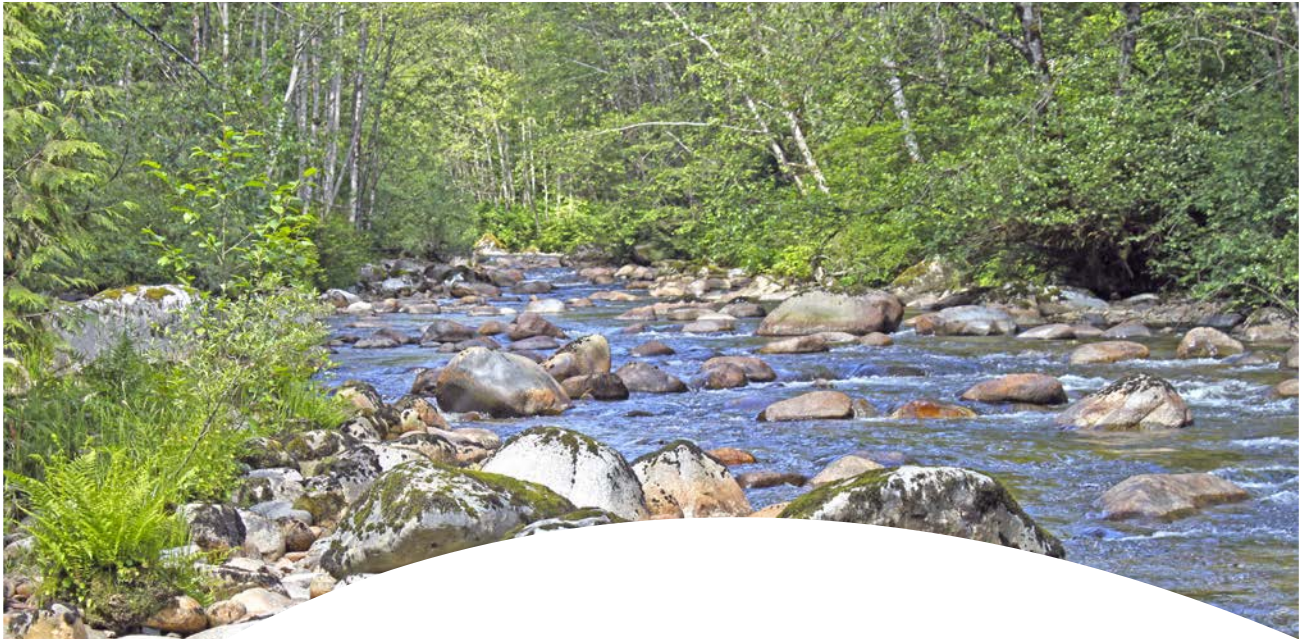




# Coquitlam River Watershed Roundtable

Kwikwetlem, known as “Red fish up the river.” A living river that reveals its spirit.

[coquitlamriverwatershed.ca](http://coquitlamriverwatershed.ca)



## The Coquitlam River Watershed Roundtable

The Coquitlam River Watershed Roundtable was founded in 2011 following a four year community engagement process. During this development period, individuals and organizations representing a broad range of perspectives on the watershed came together to develop a solid foundation for the Roundtable, including developing a mission statement, a set of values and guiding principles for the Roundtable.

The Roundtable coordinates and implements activities that promote the health and long-term sustainability of the watershed.

Anyone who supports the Roundtable’s mission can participate in Roundtable meetings, which are held once or twice a year. A multi-sector Core Committee, whose members represent the diverse sectors of interest in the watershed, meet on a regular basis to carry out the work of the Roundtable. Sectors represented on the Core Committee include: municipal, provincial, regional and federal governments, First Nations elected officials and staff; the aggregate industry; arts and culture; education; outdoor recreation; real estate development; and stewardship groups.

### 2013 – 2014 Funding Partners



The Bullitt Foundation



Above all...  
Coquitlam

## Advancing an Action Plan for the Watershed

Now in its second year, and gratefully supported by a second year of cash funding from the Real Estate Foundation of BC, Metro Vancouver and, this year, by the Bullitt Foundation and Watershed Watch Salmon Society, the Roundtable is developing a watershed plan for the Lower Coquitlam River Watershed. The plan covers the most developed part of the watershed – from the dam at Coquitlam Lake Reservoir to the mouth of the Coquitlam River, where it enters the Fraser River. Development of the plan follows the Open Standards for the Practice of Conservation, an adaptive management approach that considers both ecological and human well-being components – key to achieving our vision for a healthy watershed. The first step was finished during winter 2013 and included conducting a health assessment and identifying and rating the key pressures affecting the watershed.

**What do we care about?** Ten key components: Coquitlam River system, Salmon, Riparian Areas, Natural Areas, Human Health and Safety, Resource Industries, Liveable Communities, Cultural and Spiritual Values, Stewardship and Recreation.

**What are the pressures affecting what we care about?** The data assembled by the Roundtable found fifteen pressures to our ecological and human well-being components. Following a 'pressures rating' exercise to assess the scope, severity and irreversibility for each of the pressures, summary results found four pressures ranked very high or high for key watershed components: hazardous spills, stormwater, invasive species, and development. Another seven fell in the medium rating: water extraction, vandalism/illegal activities, roads, railroads/transportation, recreation, mainstream cultural norms, dams and dikes, and culverts; and the remainder, including urban wildlife, mining, hatcheries and sewage and wastewater spills were rated as low.

**What are contributing factors?** The Watershed Task Group was led through a conceptual modelling process to describe the connections between the ten key components the Roundtable cares about and the pressures and contributing factors to better understand why the pressures continue to exist. These included indirect threats and root causes: social, technical, funding, institutional and legal. The group subsequently identified strategies and opportunities for implementation to reduce pressures, affect positive change and provide for a healthy livable environment. During spring 2014, Roundtable participants reviewed the information and offered additional input to identify contributing factors for eight of the pressures, as well as strategies to address them. Stormwater, development, invasive species, vandalism/illegal activities, recreation, mainstream cultural norms, water extraction, and mining were selected. Over 200 strategy ideas were ranging from outreach/education, capital investment, policy, enforcement to research. Through the fall, the Watershed Task Group will assess and prioritize the strategies through 2015 and beyond.

## Level 1 Fish Habitat Assessment

During two weeks in September, the Roundtable launched its first 'boots-in-stream,' Level 1 Fish Habitat Assessment project, which assessed the streamside and river conditions to help identify enhancement opportunities for salmonid habitat rehabilitation in the lower Coquitlam River. Forty local area community volunteers, college students and faculty with the British Columbia Institute of Technology (BCIT) completed a 1 ½ day science-based training session of the assessment and data collection technique, under the direction of INStream Fisheries Research, followed by two field days to collect data throughout the 10km stretch of the lower Coquitlam River. A report, due later this year, will describe the fish species at risk, quantify fish habitat conditions and recommend areas for site-specific evaluation.

The training and fieldwork, provided by the volunteer stewards, has extended new skills related to environmental monitoring and fisheries investigations, while helping the Roundtable build a list of opportunities for future fish habitat enhancement projects for the Coquitlam River watershed.



Metro Vancouver and the Pacific Salmon Foundation provided grant funding totaling \$15,000 for this project.

## Ecosystem Services and Land Use Planning

On July 28, 2014, Dr. Craig Orr, Core Committee Member for Kwikwetlem First Nations and Executive Director for Watershed Watch Salmon Society, made a presentation to the City of Coquitlam's Council-in-Committee to highlight the importance of integrating ecosystem services in to the Northwest Burke Vision Land Use process, now underway in Coquitlam. Supported by Roundtable members in attendance, Orr conveyed the efforts by the Roundtable to develop an Action Plan for the Lower Coquitlam River watershed, which focuses on the ecological and human well-being components for a healthy, liveable community and watershed. Pressures such as development, stormwater and recreation can affect the health of the watershed. When completed, the Action Plan will

guide the implementation of the strategies to address these pressures.

The Roundtable sits as a participant on the newly formed Public Advisory Group for the Northwest Burke Vision process, and will strive to ensure the knowledge and resources gathered from the community-wide watershed planning process will be embedded as part of the process.



## 2014 Water Quality Monitoring – Third Year Underway!

The Roundtable identified water quality monitoring as a primary way of contributing to a healthy watershed. In the summer of 2012, the City of Coquitlam initiated the first year of a multi-year water quality monitoring program on the Coquitlam River to help build a current set of water quality data.



The data will not only be used to monitor the health and integrity of the Coquitlam River, it will also help guide future activities and decision-making processes in the watershed.

Samples were collected on a weekly basis during the dry and rainy seasons at seven sites along the Coquitlam River, from just below the Coquitlam River Dam to the downstream end of Colony Farm.

The 2013 results showed that twelve out of thirteen parameters tested achieved a 'green' level rating during the wet season; and, eight out of thirteen parameters tested achieved a 'green' level, and five rated a 'yellow' level during the dry season – another year of positive promising results. The data shows that the water quality in the Coquitlam River is generally healthy and stable. The 2014 program began its summer sampling during August and will continue into the wet season through the fall.

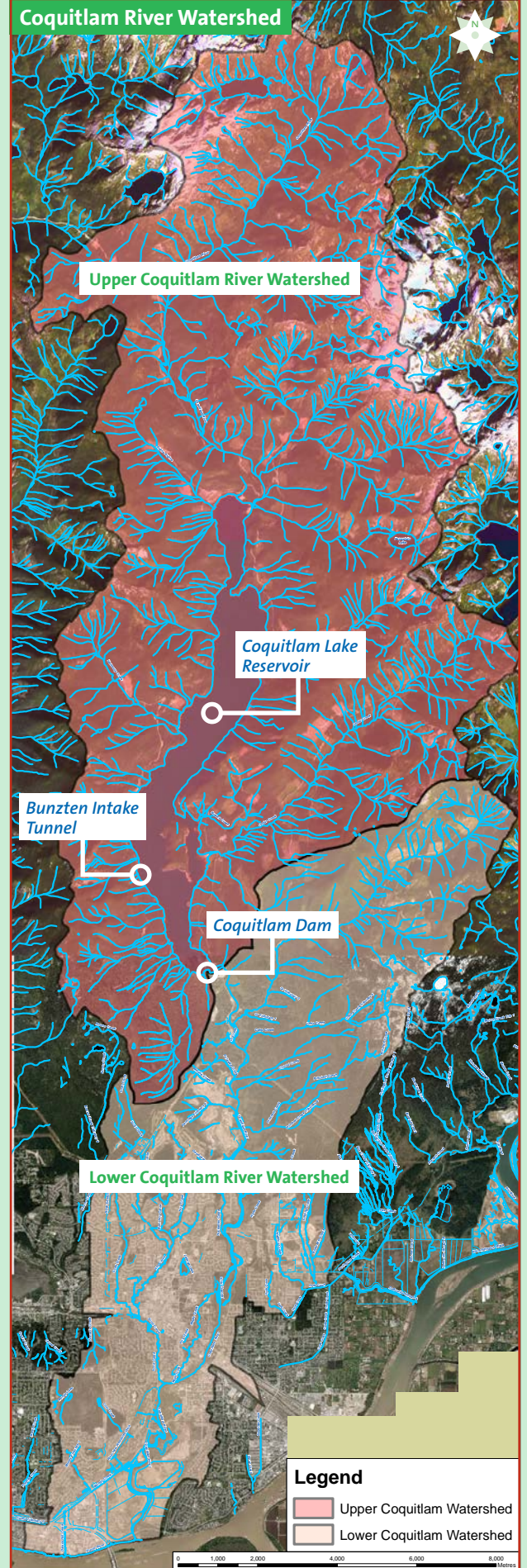
*“Metro Vancouver’s Action Plan strategic priorities ties closely to the vision and mission of the Coquitlam River Watershed Roundtable. The Metro Board strives to protect and restore connections with habitat, green space, ecosystem services, enhance connections between people and nature, and support collaborative processes to build a sustainable and livable region, such as the Roundtable strives to do for the Coquitlam River.”*  
– Mayor Greg Moore, Metro Vancouver Board Chair

## Coquitlam River Watershed

The Coquitlam River watershed is located on the north shore of the Fraser River’s lower reach in British Columbia’s Lower Mainland region, within the traditional territory of the Kwikwetlem First Nation. The watershed is divided by the Coquitlam Lake Reservoir Dam. North of the dam is undeveloped wilderness. South of the dam, the watershed is developed and covers approximately 45% of the land within the City of Coquitlam and 30% of the land within the City of Port Coquitlam. At least 30 watercourses drain into the Coquitlam River in the lower watershed before it empties into the Fraser River.

*“This process is about the desire to ensure we are doing things right so that we will have this river forever, for the benefit of future generations. The river is our lifeblood – it provides for the land and the animals. We can fix it today so that our children won’t have to ask us what happened to it. – Councillor, Kwikwetlem First Nation*

*“The Real Estate Foundation of BC is very proud to provide grant funding to develop a watershed plan, and to support a project it sees as a model for other communities throughout BC.” – Scott Ullrich, Board of Governors, REFBC*



## Mission, Values & Guiding Principles

The Mission, Values and Guiding Principles provide a firm foundation for the Roundtable's activities. They were defined and endorsed by community members and organizations who participated in numerous community meetings during the years preceding the establishment of the Roundtable.

### Mission

The Coquitlam River Watershed Roundtable will:

- facilitate collaborative resolution of urban growth and natural resource use pressures consistent with agreed community objectives and values,
- inform and educate people about these matters and the watershed, and
- promote and support conservation of a sustainable, healthy watershed environment.

### Values

Our values for the watershed are:

- Ecosystem integrity
- Home/Heritage/Culture
- Native bio-diversity
- Natural beauty
- Natural resources
- Protected areas
- Public access
- Recreation
- Responsibility to protect
- Spiritual qualities
- Sustainability


### Guiding Principles

Guiding principles are proactive statements about the way the Roundtable will operate to achieve its mission. The guiding principles are:

- Accountable
- Adaptive
- Consensus-based decision-making
- Effective and Credible
- Efficient with Capacity
- Inclusive and Respectful
- Influential and Responsible
- Proactive approach
- Relationship-building

## Contact Us! Get Involved!

More information: [coquitlamriverwatershed.ca](http://coquitlamriverwatershed.ca)

 Follow us on Twitter  
[@CoqRiverWS](https://twitter.com/CoqRiverWS)

 Like us on Facebook  
[/CoquitlamRiverWatershed](https://www.facebook.com/CoquitlamRiverWatershed)

**Subscribe to e-News!** Receive regular updates about Roundtable meetings, projects and events happening in the watershed. To subscribe, contact:

[info@coquitlamriverwatershed.ca](mailto:info@coquitlamriverwatershed.ca)

**Roundtable Coordinator:** Marni Turek is the coordinator for the Roundtable and the Core Committee. Contact her at: [coordinator@coquitlamriverwatershed.ca](mailto:coordinator@coquitlamriverwatershed.ca)

## The Roundtable Core Committee

The Core Committee is the administrative body for the Roundtable. Members represent a diverse cross section of interests in the watershed. The Core Committee meets six times a year to move forward on projects and activities proposed by the Roundtable. Members serve an 18-month term on a volunteer basis or their participation is supported by their organizations. Their in-kind donation of time is a key contributor to the success of the Roundtable. These are the sectors and organizations which are currently represented on the Core Committee:

Sector	Organization
Local Government	City of Coquitlam
	City of Port Coquitlam
First Nations	Kwikwetlem First Nation
Regional Government	Metro Vancouver, Water Management
Utilities	BC Hydro
Federal Government	Fisheries and Oceans Canada
Provincial Government	BC Ministry of Energy and Mines
Aggregate Industry	Jack Cewe Ltd.
Real Estate Development	Brook Pooni Associates, Urban Development Institute
Outdoor Recreation	Riverside Fly and Tackle
Stewardship	North Fraser Salmon Assistance Program
	Tri-City Green Council
	Port Coquitlam & District Hunting and Fishing Club
Education	BC Institute of Technology (BCIT)
Arts and Culture	ArtsConnect



**Coquitlam  
River Watershed  
Roundtable**

[coquitlamriverwatershed.ca](http://coquitlamriverwatershed.ca)